



NORTENT
NORWAY

GAMME 6



☐☐ **THE EXCEPTIONALLY GOOD
FEELING OF BEING FREE
TOGETHER WITH NATURE. THIS
IS WHAT NORTENT IS ALL
ABOUT.** ☐☐



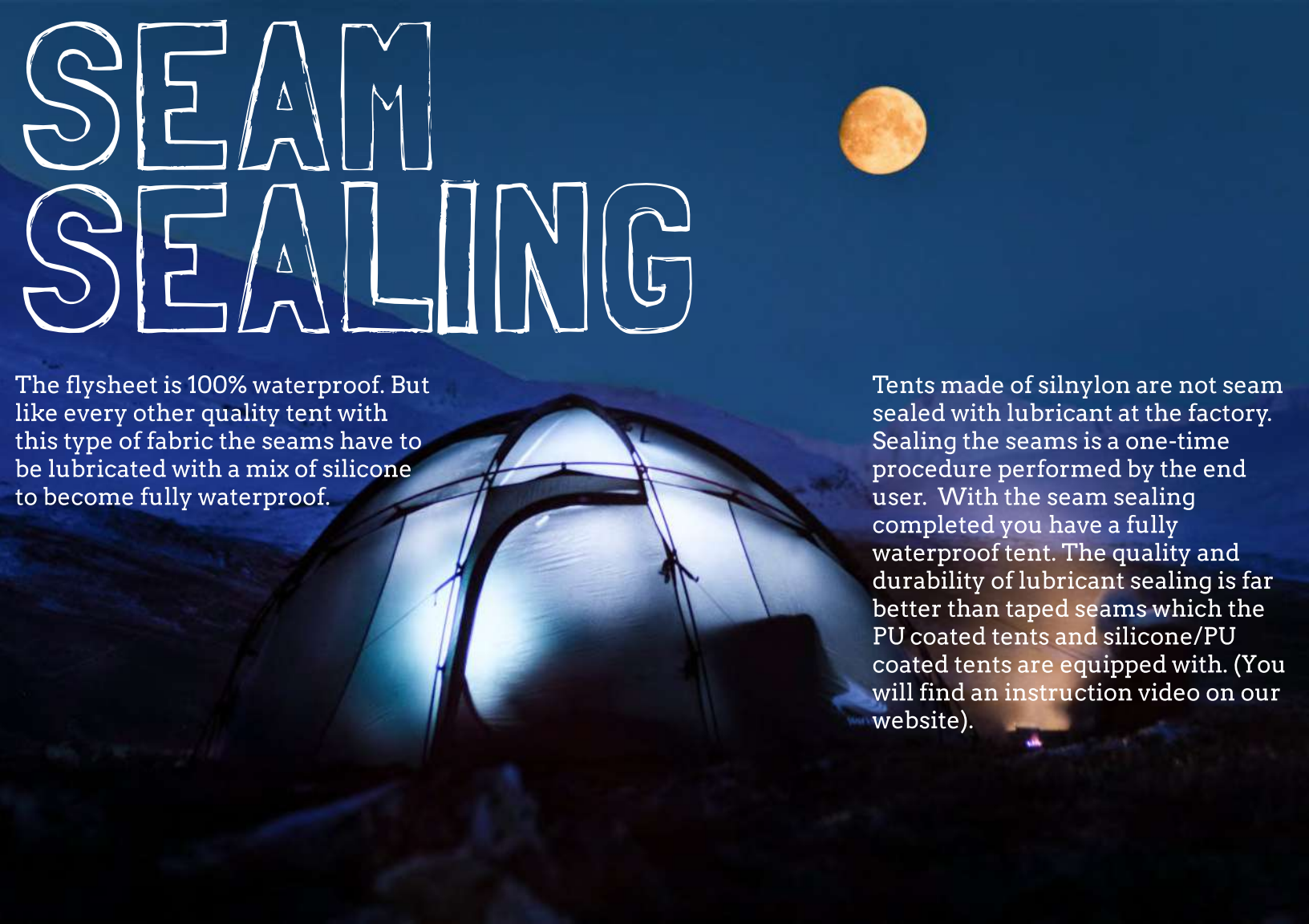
GAMME 6

Gamme 6 has a very strong construction that can withstand severe weather conditions and heavy snow-load. A "cabin" to carry in the bag. Our inspiration for this tent comes from an ancient Norwegian form of a hut. The Gamme has been used since the first people came to Norway thousands of years ago, providing a safe and secure shelter. It is still used today by indigenous Sami people of Norway.



Gamme 6 is designed around a stove. We believe having a warm and pleasant environment inside the tent enhances the complete outdoor experience.

SEAM SEALING



The flysheet is 100% waterproof. But like every other quality tent with this type of fabric the seams have to be lubricated with a mix of silicone to become fully waterproof.

Tents made of silnylon are not seam sealed with lubricant at the factory. Sealing the seams is a one-time procedure performed by the end user. With the seam sealing completed you have a fully waterproof tent. The quality and durability of lubricant sealing is far better than taped seams which the PU coated tents and silicone/PU coated tents are equipped with. (You will find an instruction video on our website).



THE FIGHT AGAINST CONDENSATION

**WHEN THE HUMID AIR HITS THE COOLER
TENT WALLS IT IS TRANSFORMED INTO
LIQUID WATER DRIPPING DOWN FROM THE
WALLS AND CEILING**

Here are three solutions:

- 1. Heating .** Hot air absorbs more moisture..
- 2. Inner tent.** The humid air passes through the inner tent and leaves this area dry .
- 3. Ventilation.** Humid air is transported out of the tent.

TAKING CARE OF YOUR TENT

ADJUSTING AND ADAPTING THE TENSION

It is essential to release the tension of the flysheet during the day equally to what it was tightened to the evening before. If you do not do this the flysheet will tighten further with powerful tension. At worst it may have stretched the fabric to a degree beyond breaking point. Rule of thumb; never let the flysheet become tight like a drumhead.



PITCHING YOUR GAMME 6

Our tent poles are of high quality and are very flexible and strong. They are tested in the real world under high stress for optimal and correct understanding of its durability. But nevertheless they are lightweight aluminum and could break if not handled correctly. For best use, strength and durability of your pole, ensure that each section is properly inserted into place, and ensure that pole sections do not pull apart during pitching, as the resulting gaps can lead to breakage.

Silnylon is "alive". Well not completely, but silnylon is a very dynamic fabric. It stretches, moves, contracts and retains depending on temperature and humidity. For flexibility it is one of the best fabrics to choose for the flysheet. With an elastic material the external forces will be more evenly distributed, with less degree of the wind tugging and pulling on the flysheet. Because the fabric is dynamic it means you have to adjust the tension on the flysheet according to the temperature and humidity.

Depending on the surrounding and weather it is perhaps a good idea to put together the five poles before unpacking the tent.



For easy setup, use a stake at the entrance to hold the tent in place



Start with the three black poles. You need these first.



Identify the black holster between the two red holsters.



Then insert one of the black poles through the sleeve above the black holster.



Insert the black pole into the black holster.



Then identify the black holster on the opposite side, and insert the pole.



And then stake at opposite entrance.



Gamme is a big tent. Try to keep a low profile into the wind when inserting the next black pole into the shorter sleeve.



Use as little force as possible. The pole should slide in easily. Work with the sleeve on both sides of the tent.



It may be a good idea to insert the pole into the corresponding ring hook



Insert the pole into the corresponding black holster on both sides of the sleeve



Insert the third black pole. Do not force the pole!



It may be a good idea to insert the pole into the corresponding ring hook-hook for extra support when pushing the pole through.



Insert the pole into the corresponding black holster.



Attach the two red poles.



Insert the red poles into the red holsters between the two black holsters.



Attach the clips to the poles.





Attach the velcro-strap around the three crossing poles on both sides.



Stakeout around the tent. All stakeouts are adjustable.



Adjust the adjustable strap for the stakeout. The flysheet should not be too tight.



Unfold the guylines and stake them out if you are expecting bad weather. All ten.



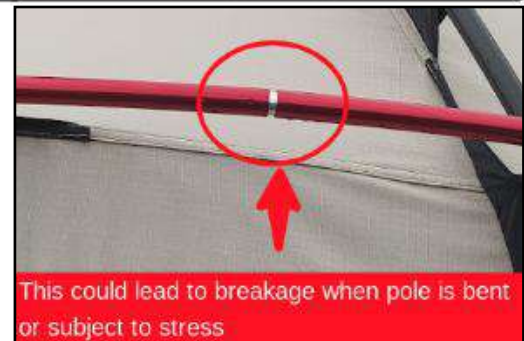
Wrap the strap attached to the guylines around the pole.



You are done!

Important note about pole usage.

Our tent poles are of high quality and are very flexible and strong. They are tested in the real world under high stress for optimal and correct understanding of its durability. But nevertheless they are lightweight aluminum and could break if not handled correctly. For best use, strength and durability of your pole, ensure that each section is properly inserted into place, and ensure that pole sections do not pull apart during pitching, as the resulting gaps can lead to breakage.



This could lead to breakage when pole is bent or subject to stress

A glowing orange tent is pitched in a snowy forest at night. The tent is illuminated from within, casting a warm light that contrasts with the cool blue tones of the night sky and the dark silhouettes of the trees. The ground is covered in snow, and the trees are tall and thin, typical of a boreal forest. The overall atmosphere is serene and cozy.

NORTENT AS

Norway

info@nortent.com

www.nortent.com

 Instagram

 facebook